

oakheart



£280,000

Asking Price

Cloverfields, Bury St. Edmunds

Nestled in the charming village of Thurston, this delightful three-bedroom semi-detached house offers a perfect blend of comfort and convenience. The property is ideally situated in a well-served village, boasting a train station, reputable schools, inviting pubs, and a variety of shops, making it an excellent choice for families and commuters alike.

Upon entering, you will find a spacious reception room that provides a warm and welcoming atmosphere, perfect for both

relaxation and entertaining, the generous sized kitchen complements the ground floor accommodation. The house features three well-proportioned bedrooms, ensuring ample space for family living. The family bathroom is thoughtfully designed, complemented by a convenient ground floor cloakroom, enhancing the practicality of the home.

The property benefits from gas radiator heating and double glazing, ensuring a cosy environment throughout the year.

Outside, you will discover a garage and a driveway that accommodates up to two vehicles, providing secure parking and additional storage options.

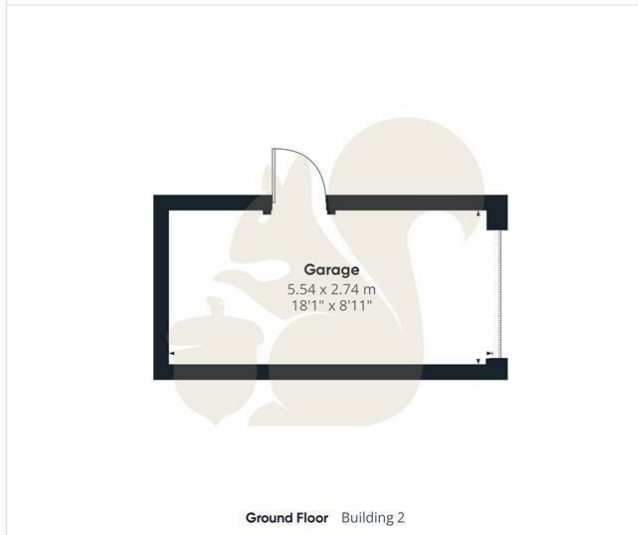
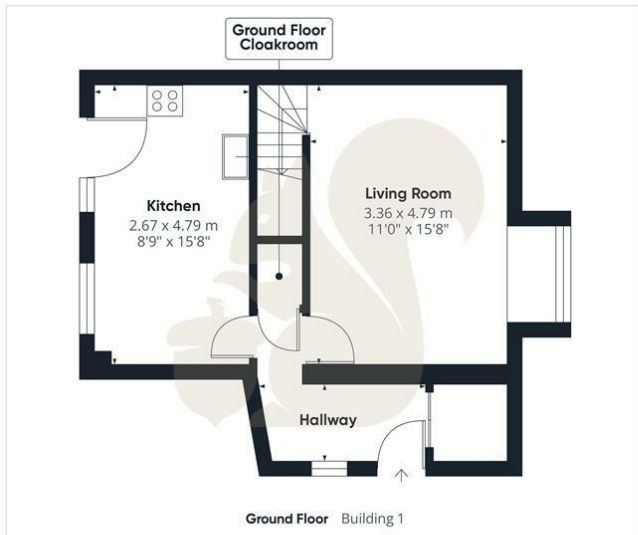
This semi-detached house is not only a wonderful family home but also a fantastic opportunity to enjoy the vibrant community life that Thurston has to offer. With its excellent local amenities and transport links, this property is sure to appeal to those seeking a comfortable and convenient lifestyle in a picturesque village setting.











oakheart

Main building GLATM
79.19 m²
852.35 ft²

Main building total
79.19 m²
852.35 ft²

Building 2 total
16.43 m²
176.85 ft²

(1) Finished, above grade

Ext. wall thickness assumed: 15.24 cm/6 in

Calculations reference the ANSI-Z765 standard. Measurements are approximate and not to scale. This floor plan is intended for illustration only.


GIRAFFE360

Local Authority:

Tenure:
Freehold

Council Tax Band:

Energy Efficiency Rating

	Current	Potential
<i>Very energy efficient - lower running costs</i>		
(92 plus) A		
(81-91) B		
(69-80) C		
(55-68) D		
(39-54) E		
(21-38) F		
(1-20) G		
<i>Not energy efficient - higher running costs</i>		
England & Wales	EU Directive 2002/91/EC 	

Agents Note: Whilst every care has been taken to prepare these particulars, they are for guidance purposes only. All measurements are approximate and are for general guidance purposes only and whilst every care has been taken to ensure their accuracy, they should not be relied upon.